

Ideate. Innovate. Implement.

1 Riyadh, KSA

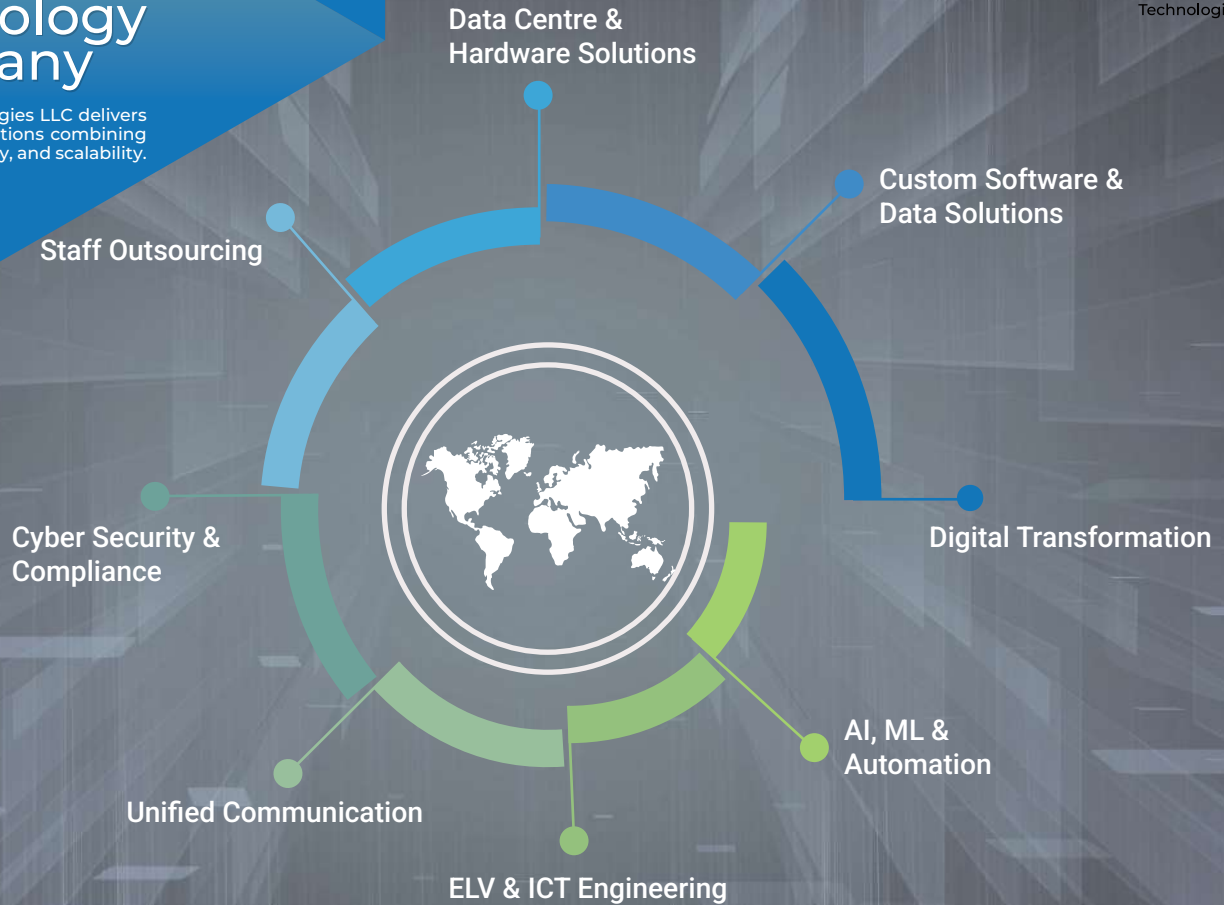
2 Dubai – UAE

✉ info@envt.com

🌐 www.envt.com

Full Service Technology Company

Envision Technologies LLC delivers end to end IT solutions combining innovation, security, and scalability.



OUR CORE VALUES

E

ENVISIONING POSSIBILITIES

We are guided by a clear vision to shape the future through purposeful ideas and strategic thinking.



N

NURTURING EXCELLENCE

Our commitment lies in delivering quality, fostering growth, and upholding professional standards.



V

VALUING INTEGRITY

We operate with honesty, transparency, and respect in every relationship we build.



T

TRANSFORMING OUTCOMES

We focus on delivering meaningful results that drive progress and lasting impact.



OUR KEYS SUCCESS FACTORS ... SO FAR

- ▶ Leveraging the intellect of our empowered people to deliver optimized, cost-effective solutions.
- ▶ Remaining true to our values



We think creative

Introduction of requirement elicitation processes, design, testing, deployment and operations and support.



We stand for simplicity

With straightforward implementation methodology, we tackle complex environment with simple step by step approach towards our goals



We do amazing projects

We cover all domains, from manual to highly automated projects, whether onshore or offshore, with great commitment.



And we do it on time

We are on time because we make things transparent to our clients from Day 1 until Go- Live



Navigating Our Profile

- 01 Clients and Partners
- 02 Digital Transformation
- 03 Custom Software & Data Solutions
- 04 AI, ML & Automation Services
- 05 Data Center Solutions
- 06 End-to-End Hardware Solutions
- 07 Staff Outsourcing
- 08 Cyber Security and Compliance
- 09 Unified Communication
- 10 Advanced ELV & ICT Engineering



**CLIENTS &
PARTNERS**

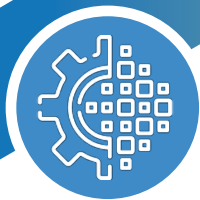
OUR CLIENTS

Envision
Technologies



OUR PARTNERS





**DIGITAL
TRANSFORMATION**





Enhance Existing Processes

Streamline operations
Improve efficiency,
Adapt to changing market demands
Effective workflows
Better resource management



Customer Interactions

Personalization
Seamless experience
Automation
Customer feedback
Enhanced support



Digital Technologies

Artificial Intelligence (AI)
Big Data Analytics
Cloud Computing
Internet of Things (IoT)
Blockchain



Culture

Innovation mindset
Collaboration
Continuous learning
Customer-centric approach



Innovation

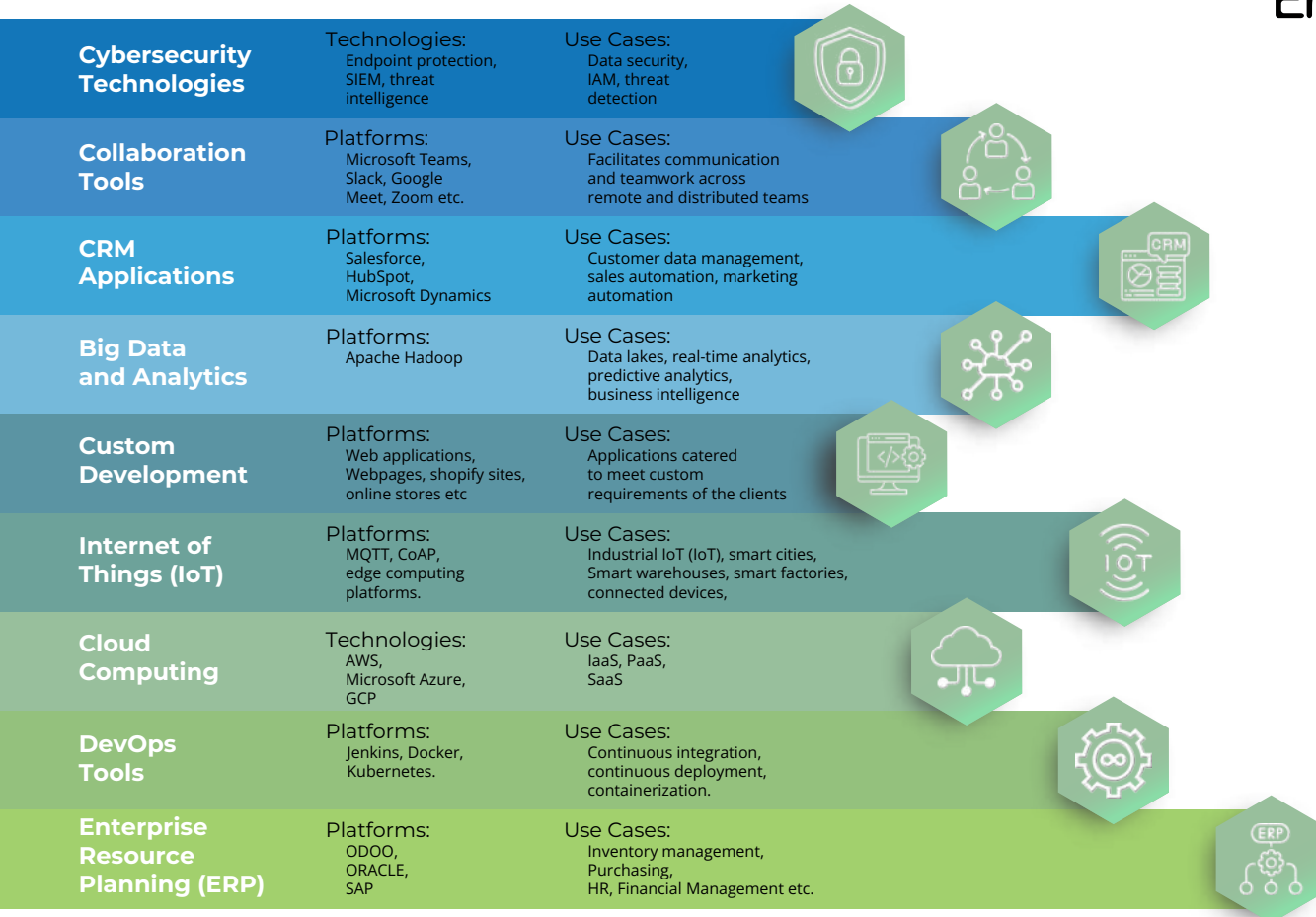
Product innovation
Process innovation
Business model innovation
Customer experience innovation



Adaptability

Staying competitive.
Incorporate new technologies
and methodologies.
Withstand disruptions and
continue to operate effectively.
Proactive change management

Solutions to Drive Digital Transformation





```
elif_operation == "MIRROR_Y":
    mirror_mod.use_x = False
    mirror_mod.use_y = True
    mirror_mod.use_z = False
elif_operation == "MIRROR_Z":
    mirror_mod.use_x = False
    mirror_mod.use_y = False
    mirror_mod.use_z = True

#selection at the end -add back the deselected mirror modifier object
mirror_ob.select= 1
modifier_ob.select=1
bpy.context.scene.objects.active = modifier_ob
print("Selected" + str(modifier_ob)) # modifier ob is the active
#mirror_ob.select = 0
#bpy.context.selected_objects[0]
#bpy.context.scene.objects.active = 0
```

**CUSTOM
SOFTWARE &
DATA SOLUTIONS**

Custom Software & Data Solutions

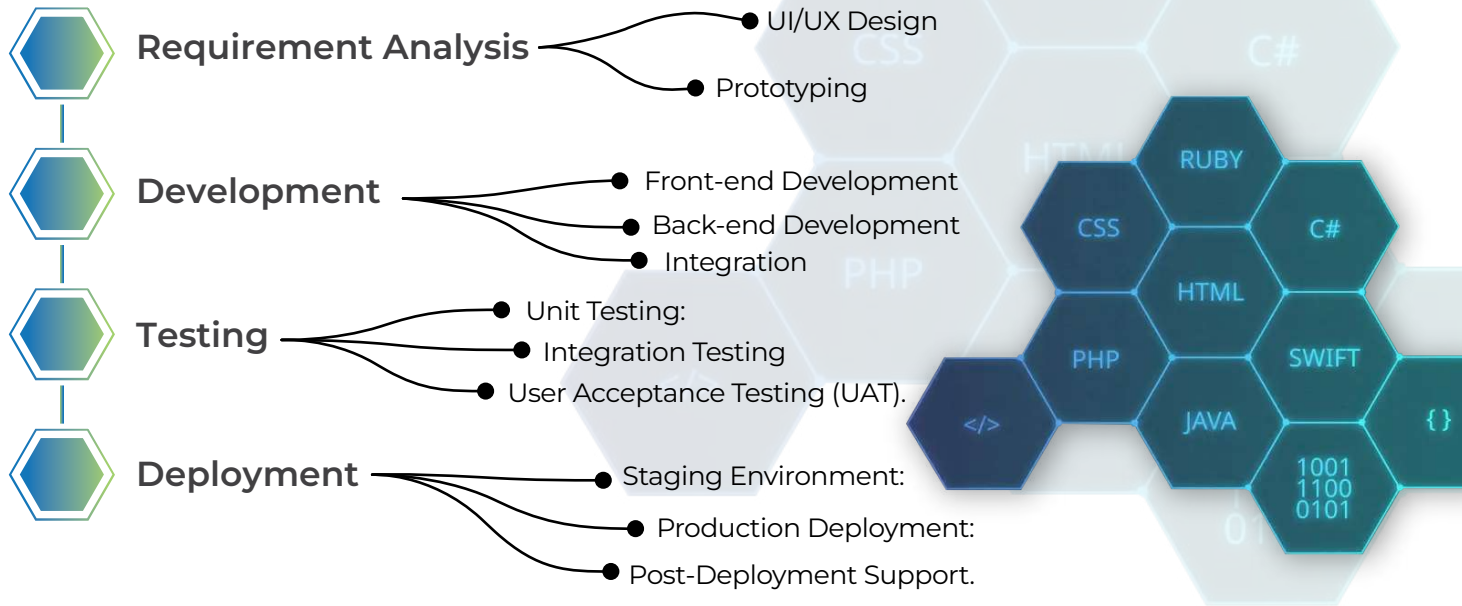
Envision Technologies can develop reliable, scalable and secure software solutions for any OS, browser and device. We bring together deep industry expertise and the latest IT advancements to deliver custom solutions and products that perfectly fit the needs and behavior of their users.

- Custom Development
- Web | Mobile | Kiosk
- Industrial IoT
- Big Data
- Data Analytics



Custom Software Development:

Envision Technologies offers comprehensive custom software development services, ensuring a seamless process from concept to deployment. Envision Technologies expertise in these areas ensures that they can deliver high-quality custom applications efficiently and effectively.





Web Development

- **Front-End Development:** We build responsive, UI that deliver seamless digital experiences.
- **Back End Development:** Server side solutions ensure secure, scalable, and high-performance functionality.
- **WordPress Websites:** Corporate Scalable WordPress sites WooCommerce stores for online sales.



Mobile Development

- **iOS Development:** Native applications for iPhones and iPads using Swift or Objective-C.
- **Android Development:** Creating native applications for Android devices using Java or Kotlin.
- **Cross-Platform Development:** Using frameworks like Flutter, React Native, or Xamarin.



Kiosk Development

- **Interactive Kiosks:** Native applications for iPhones and iPads using Swift or Objective-C.
- **Custom Solutions:** Meet specific business needs, including payment processing, information display, and customer interaction.
- **Integration:** Seamless integration with existing systems and hardware components.

Industrial IoT (Internet of things) Solution:

01 Edge Computing

03 Data Collection

05 Data Ingestion

07 Data Storage

09 Value-Centered Approach

11 Security

02 Device Integration

04 Multi-Level Data Pipelines

06 Data Processing:

- Edge Processing
- Cloud Processing

08 Data Science

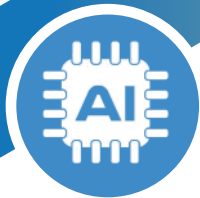
10 Scalability

12 Efficiency



Big Data & Data Analytics





AI, ML &
**AUTOMATION
SERVICES**

AI, ML & Automation Services

Envision Technologies is your partner in delivering future ready AI intelligent, scalable and Machine Learning solutions for businesses across all industries that are practical, ethical, and impactful.

Our services are designed to enhance

- Decision making
- Automate processes
- Unlock actionable insights from data



Key Capabilities:

NATURAL LANGUAGE PROCESSING (NLP)

Advanced language models with Arabic support for chatbots, sentiment analysis, and document automation.

FORECASTING & PREDICTIVE ANALYTICS

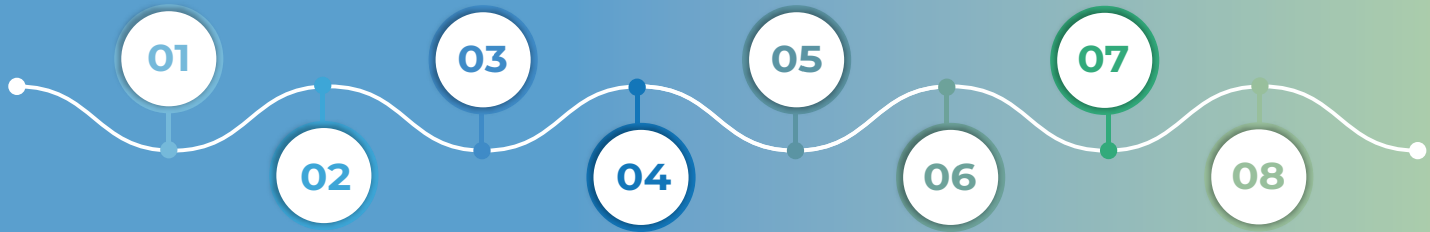
Data driven models to anticipate trends, demand, and anomalies.

INTELLIGENT PLATFORMS

AI integrated systems for smart automation and real time analytics.

DATA ENGINEERING & DATA SCIENCE

End to end data solutions from infrastructure to advanced analytics.



COMPUTER VISION

Image and video analysis for object detection, facial recognition, and visual intelligence.

GENERATIVE AI

Tools for content creation, personalization, and simulation.

SMART ENGINES

Custom engines for recommendations, fraud detection, and adaptive learning.

ROBOTIC PROCESS AUTOMATION (RPA)

Automation of repetitive tasks to improve speed, accuracy, and compliance.





DATA CENTER
SOLUTIONS

We Specialize in DATA CENTER SOLUTIONS



Assess Needs:

Determine the data processing, storage, and connectivity requirements.



Capacity Planning:

Estimate the current and future capacity needs to ensure scalability.



Define KPIs:

Energy consumption, resource utilization, uptime.



Evaluate existing IT infrastructure

We evaluate existing IT infrastructure to ensure alignment with proposed data center solutions.



Experience the Future of Data Centers:

Envision Technologies' Expertly Designed Services, Including Comprehensive Assessment, Seamless Deployment, and Ongoing Optimization.





Design Layout

Space Planning:

Allocate space for servers, storage, networking equipment, and cooling systems.

Racks and Cabling:

Design the layout for racks and cabling to maximize space and ensure efficient airflow



Network Infrastructure

Connectivity Redundancy:

Ensure multiple carrier options and diverse path routing for reliable connectivity.

Security:

Implement network security measures such as firewalls and intrusion detection systems.



Power Infrastructure and Efficiency

Redundancy:

Ensure a reliable power supply with redundancy (e.g., dual power sources).

Uninterruptible Power Supply (UPS):

Implement UPS systems to protect against power outages.

Backup Generators:

Install backup generators for extended power outages



Location and Environmental Factors

Site Selection:

Choose a location with reliable power and network

Environmental Impact:

Implement sustainable practices and consider green energy options.



Physical Security and Access Control

Perimeter Security:

Secure the facility with strong perimeter protection.

Access Control:

Use biometric systems, key cards, and mantrap entries to control access

Surveillance:

Install surveillance cameras and monitoring systems



Cooling Systems

HVAC Systems:

Design heating, ventilation, and air conditioning (HVAC) systems to maintain optimal temperature and humidity levels

Thermal Management:

Implement effective cooling solutions like raised floors, in-row cooling, or liquid cooling.

Airflow Management:

Use hot and cold aisle containment to optimize airflow and cooling efficiency



Compliance and Standards

Regulations:

Ensure compliance with relevant regulations and standards (e.g., NFPA, UL, ISO).

Best Practices:

Follow industry best practices for data center design and operation.



Fire Protection

Perimeter Security:

Secure the facility with strong perimeter protection.

Suppression Systems:

Use biometric systems, key cards, and mantrap entries to control access



Monitoring and Maintenance

Continuous Monitoring:

Implement systems to continuously monitor performance and security.

Regular Maintenance:

Plan for regular upgrades and maintenance to keep the data center up to date



END-TO-END
HARDWARE
SOLUTIONS

NETWORKING



CISCO CATALYST SERIES SWITCHES

Catalyst 9200 Series: Simplicity, security, and always on reliability
Catalyst 9300 Series: Security, IOT, and cloud, providing high performance and flexibility
Catalyst 9500 Series: For core and aggregation layers, offering high density and advanced security features



ATEN LCD KVM SWITCHES

- Single Rail LCD KVM Switches ATEN CL3116NX, CL3700, CL3108, CL3800
- Dual Rail LCD KVM Switches ATEN CL5808, CL5816, CL5708, CL5716
- LCD KVM OVER IP Switches ATEN KL1116VN, KL1508Ai, KL1516Ai
- High Density LCD KVM Switches ATEN CL5716M, CL5716N



JUNIPER NETWORKS MX SERIES ROUTERS

High Performance: Capable of handling high data throughput with advanced routing capabilities
Scalability: Modular design allows for easy expansion and upgrades
Advanced Features: Support for various networking protocols and security features for complex network environments



PALO ALTO NETWORKS NEXT-GEN FIREWALLS

Threat Prevention: Capable of handling high data throughput with advanced routing capabilities
Application Control: Modular design allows for easy expansion and upgrades
User Identification: Support for various networking protocols and security features for complex network environments
Advanced Threat Intelligence: Utilizes machine learning and cloud based threat intelligence to detect and prevent sophisticated attacks

SERVERS:



HP PROLIANT SERIES:

- Scalability and robust performance
- Small to large enterprises



ASUS SERVERS:

- For applications requiring powerful processing capabilities



DELL POWEREDGE SERIES:

- Reliability and performance
- Used in various configurations
- Including rack and tower models



LENOVO THINKSYSTEM SERIES:

- Efficiency
- Advanced features

1

VERTIV LIEBERT CRAC UNITS:

- Durability and versatility.
- Designed to meet the demands of modern data centers

2

SCHNEIDER ELECTRIC NETSHELTER RACKS:

- Racks and enclosures are designed for various IT environments, from network closets to large data centers.
- Robust and flexible solutions for housing IT equipment

3

RITTAL TS IT ENCLOSURES

- Durability and versatility.
- Designed to meet the demands of modern data centers

DATA CENTER INFRASTRUCTURE SOLUTIONS

STORAGE SYSTEMS

EMC UNITY SERIES (DELL EMC):

- Simplifies file and block data configuration, management, and protection.
- Offers high availability with dual active controllers and supports multicloud interoperability

NETAPP FAS SERIES:

- Economical and secure storage with automated data tiering, backup, and cyber vault capabilities.

HPE 3PAR STORESERV:

- AI-powered storage with high performance, low latency, and guaranteed 99.9999% data availability.
- It supports mission critical workloads and offers automated provisioning and hardware accelerated deduplication

PURE STORAGE FLASHARRAY:

- Provides high performance with NVMe storage
- Unified block and file storage, and non disruptive upgrades
- Advanced data protection features and is designed for efficiency and scalability

POWER AND UPS SOLUTIONS FOR DATA CENTERS

CUMMINS POWER GENERATION

CATERPILLAR INC. (CAT)

APC BY SCHNEIDER ELECTRIC UPS

- For large data centers and mission-critical applications.
- Modular and scalable

EATON CORPORATION UPS

- Clean and uninterrupted power
- Enable seamless system shutdown during complete outages
- Battery capacity for extended runtime during longer outages, and work with standby generators for continuous power supply

BACKUP AND DR

VEEAM BACKUP & REPLICATION:

- Backup and recovery for virtual, physical, NAS, and cloud native environments.
- Instant recovery, ransomware protection, and hybrid cloud support

COMMAVAULT BACKUP & RECOVERY:

- Data protection across cloud, on premises, and SaaS environments.
- Advanced cyber resilience, automated data management, and integration with existing platforms

VERITAS NETBACKUP:

- Delivers enterprise class data protection with automated operations hybrid cloud optimization, and robust cyber resilience.
- Supports a wide range of workloads and environments, ensuring data integrity and security

RUBRIK CLOUD DATA MANAGEMENT:

- Cloud native protection with a focus on cyber resilience.
- Features like immutable backups, data threat analytics, and automated recovery workflows across enterprise, cloud, and SaaS environments



LAPTOPS

HP ELITEBOOK SERIES

Robust security, durability, and collaboration tools. AI-driven productivity enhancements, advanced security measures.

LENOVO THINKPAD SERIES

Durability, exceptional keyboards, and business oriented features. Ultraportable X1 series, the versatile T series, P Series and the entry-level E series

HUAWEI MATEBOOK 14 AND XPRO

Lightweight and features a high resolution display, advanced AI capabilities.



DELL LATITUDE SERIES

From ultra portable 2-in-1s to powerful laptops with the latest Intel Core processors, long battery life, and advanced security features.



HP PROBOOK SERIES

Perfect balance of performance, durability, and value Robust build quality and essential business features.



MICROSOFT SURFACE FOR BUSINESS

Sleek design with powerful performance. Surface Laptop and Surface Pro with advanced AI capabilities.



MATEBOOK 14

Performance and portability with a high quality display, robust build, and efficient processors.



WORKSTATIONS

DELL PRECISION WORKSTATIONS

High performance and reliability, 3D rendering, CAD, and data analysis. mobile and fixed (tower and rack) solutions

HP Z WORKSTATIONS

High performance computing tasks, including AI development, 3D modeling, and video editing. Optimized for maximum compatibility with leading software applications

LENOVO THINKSTATION SERIES

Robust performance for CAD, 3D animation, and data analysis. Designed to handle intensive tasks with ease



DELL OPTIPLEX DESKTOP AND ALL IN ONE

Designed for corporate enterprises, healthcare, government, and education markets.

HP ELITE SERIES

Suitable for intensive workloads Simplified IT management

AI / ML WORKSTATIONS (SUPERMICRO/LAMBDA)

Specialized workstations for AI and machine learning tasks. Pre installed with popular AI frameworks like TensorFlow and PyTorch



OUTSOURCING

En **ision**
Technologies

**STAFF
OUTSOURCING**

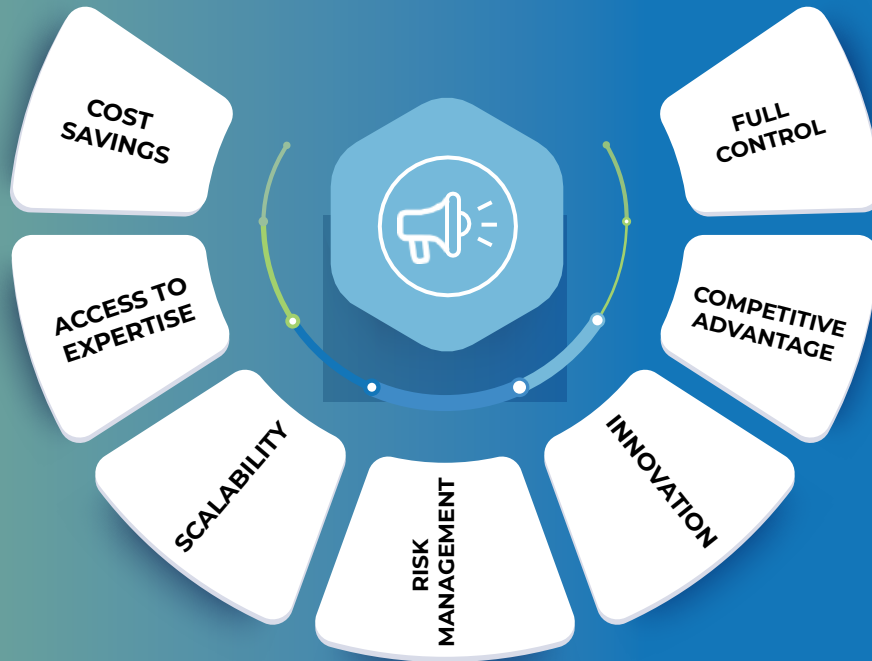


PIONEERS IN STAFF AUGMENTATION AND OUTSOURCING

- ▶ Provide flexible staffing solutions tailored to your business needs
- ▶ Access top tier talent for projects or specialized roles
- ▶ Scale your team quickly and efficiently
- ▶ Focus on core objectives while we handle recruitment and workforce management
- ▶ Ensure seamless integration and optimal performance



Enhance Your Team Maximizing Potential with Premier Staff Augmentation Services





**CYBER SECURITY
AND COMPLIANCE**



End Point Security

Implementation of security measures to protect endpoint cyberattacks. These measures ensure that devices used by employees or connected to the network are secure, preventing unauthorized access and data breaches.

Detection and Prevention
Monitoring and Response
Policy Enforcement
Data Protection



Email Security

Protecting email communication from various threats such as phishing, malware, and spam.

Encryption:
Ensures that email content is only accessible to intended recipients.

Spam Filters:
Block unwanted and potentially harmful emails.

Malware Scanning:
Detects and removes malicious attachments.

Advanced Threat Detection:
Identifies sophisticated threats like spear phishing and business email compromise (BEC)



Cloud Security

Focuses on protecting data, applications, and services hosted in the cloud.

Data Encryption:
Protects data both in transit and at rest.

Access Control:
Ensures that only authorized users can access cloud resources.

Threat Detection and Response:
Monitors for suspicious activities and responds to potential threats.

Compliance Management:
Ensures that cloud services comply with relevant regulations and standards



Identity and Access Management

IAM involves a set of processes, policies, and technologies used to manage and secure access to an organization's resources.

Identity Management
Access Management
Authentication
Authorization
Identity Governance



Security Operations Centers

Centralized units that monitor, detect, and respond to cyber threats 24/7.

Threat Detection and Response

Continuous Monitoring

Incident Management

Threat Intelligence



Cybersecurity Governance

Set of policies, processes, and practices to manage, protect, and oversee information systems and digital assets.

Accountability Frameworks

Decision Making Hierarchies

Risk Management

Compliance



Risk Management

Identifying, assessing, and mitigating risks to an organization's information systems. It helps organizations understand their risk exposure and implement appropriate controls.

Accountability Frameworks

Decision Making Hierarchies

Risk Management

Compliance

CYBERSECURITY

OVERSEEING AND EXECUTING PROJECTS WITH A STRUCTURED APPROACH

During our in depth assessment, we review security policy & process implementation along with gathering evidence to determine NCA compliance status.

Conduct a thorough evaluation that includes sub domain level maturity assessments to provide a granular view of organization's cybersecurity posture. This approach ensures that every aspect of your security framework is scrutinized and optimized.

Develop a clear and comprehensive cybersecurity strategy tailored to specific needs including an actionable roadmap that outlines the steps required to achieve and maintain compliance.

A detailed implementation plan, which serves as a guide for executing the necessary changes and improvements.

By managing the compliance initiative as a program, we ensure continuous monitoring, regular updates, and consistent progress towards your cybersecurity goals.

This structured approach not only helps in achieving compliance but also strengthens your overall security infrastructure, making it more resilient against potential threats.

CYBERSECURITY AND DATA PROTECTION FRAMEWORKS

SIEM (Security Information and Event Management)

SIEM solutions collect, aggregate, and analyze security data from various sources to detect, investigate, and respond to security incidents in real-time. They provide a comprehensive view of an organization's security posture, helping to identify potential threats and ensure compliance with regulatory standards.

MDR (Managed Detection and Response)

Combines advanced technology and human expertise to monitor, detect, and respond to cyber threats. It provides continuous threat hunting, incident response, and remediation, helping organizations protect themselves from sophisticated cyberattacks without the need for additional in-house security staff.

SOAR (Security Orchestration, Automation, and Response)

Automate and coordinate security incident response processes. They integrate with various security tools to streamline workflows, reduce manual intervention, and enable faster and more efficient responses to security incidents.

GDPR (General Data Protection Regulation)

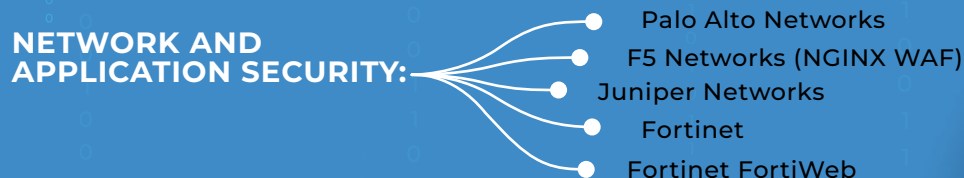
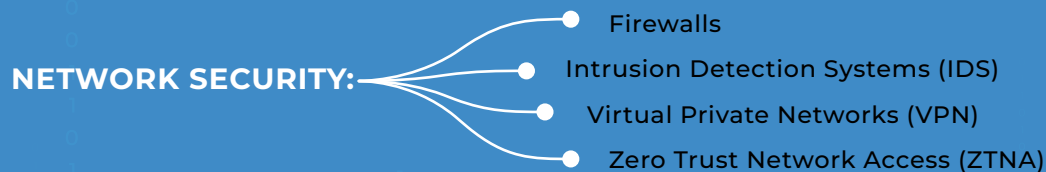
GDPR is a regulation enacted by the European Union to protect the privacy and personal data of individuals within the EU. It sets strict guidelines for data collection, processing, and storage, and grants individuals rights over their personal data.

ISO (International Organization for Standardization)

It develops and publishes standards to ensure the quality, safety, and efficiency of products, services, and systems. ISO standards cover a wide range of industries and help organizations improve their processes and meet regulatory requirements.

NCA (National Cybersecurity Authority)

In the context of cybersecurity, NCA often refers to national authorities responsible for overseeing and enforcing cybersecurity policies and regulations. Saudi Arabia's National Cybersecurity Authority (NCA) sets guidelines and standards to protect the country's digital infrastructure and ensure compliance with cybersecurity best practices.





**UNIFIED
COMMUNICATION**



Envision Technologies specializes in developing and integrating call center solutions. Our Services include comprehensive implementation support such as installation, configuration, integration, and development. Additionally, we excel in monitoring, business intelligence, and customer service analytics to ensure optimal performance and enhanced customer experiences.

At ENVT, we are dedicated to helping you identify and implement the key accelerators that drive the success of your call center.

Hands-On Business Experience:

Extensive experience in servicing call centers, we understand your unique challenges and needs.

Technical Expertise:

Deep knowledge of call center infrastructure, technology frameworks, systems, and business processes.

Adopting

The best customer channels (Voice, Digital Channel Twitter, Whatsapp, Live Chat and Self services IVR)

Monitoring

Contact Center performance Customer Feedback (Recording, Dashboard, KPI's, real time and historical reporting)

Automating

Customer Experience with Integrating with CRM, Chatbot and Self Services IVR



Partner with us to transform your vision into reality and stay ahead in an ever-evolving technological landscape. Together, we can build a smarter, more connected future.

xccally™

XCALLY is a flexible omnichannel contact center platform that unifies voice, chat, email, and social media.

We help clients deploy and customize XCALLY to streamline customer interactions, integrate with CRMs, and boost agent efficiency.

GENESYS

Genesys offers AI-powered customer experience solutions across digital and voice channels.

We support clients in deploying Genesys Cloud or on premise setups, optimizing workflows, and enhancing customer engagement.

ac
audiocodes

AudioCodes provides advanced voice networking solutions, including SBCs and Microsoft Teams integrations.

We help clients deploy and customize XCALLY to streamline customer interactions, integrate with CRMs, and boost agent efficiency.

AVAYA

Avaya delivers reliable communication and contact center solutions for businesses of all sizes.

We assist clients in designing, implementing, and maintaining Avaya systems to ensure seamless voice and collaboration experiences.



ADVANCED
ELV & ICT
ENGINEERING

ELV & ICT SOLUTION



Role of ICT and ELV Systems

- Information & Communications Technology (ICT) is also referred to as Extra Low Voltage (ELV) systems operate below 50V AC or 120V DC
- Used for communication, security, automation, and control
- Enhances safety, efficiency, and smart integration in buildings
- Play a critical role in the facility operations and positive occupant experience.

TURNKEY DELIVERY

(Design, Installation, Integration, Testing, Training, Support)



At Envision Technologies we offer

- Expertise in end-to-end ELV system integration
- Customized solutions for diverse industries
- Compliance with international standards
- Reliable support and future-ready designs



Industries we Serve

- Commercial & Residential Buildings
- Hospitals & Healthcare Facilities
- Educational Institutions
- Hotels & Hospitality
- Industrial Plants & Warehouses
- Government & Defense





Smart Building Automation

- Build Management Systems (BMS)
- Intercom Systems
- IDAS Systems (Integrated Digital Addressable Systems)
- Centralized control of HVAC, lighting, and energy
- Real-time monitoring and automation
- Integration with fire, access, and security systems

Passive Infrastructure

We deliver high performance infrastructure aligned with BICSI and TIA standards, ensuring reliability and scalability.

Services Include:

Structured Cabling & Fiber (ISP/OSP)
IDF/Telecom Room Fit-outs
Duct Banks & Containment
Equipment & Cable Management
PDUs & Power Distribution
Coordinated Ceiling & Corridor Plans
BIM & Clash Detection (NAVISWORKS)

Communications

- Wireless Communication WIFI 6
- IP Telephony Systems
- Radio Network

Active Equipment

- Hyper Converged Infrastructure
- Virtual Desktop Interface (VDI)
- Storage Network Systems
- Data Networking Equipment
- Cyber Security and Firewalls

Security & FLS Systems

We deliver fully compliant safety and security solutions aligned with local, regional, and international codes.

Core Systems:

Access Control & IP CCTV
Fire Alarm & Smoke Management
Intrusion Detection & Public Address

Specialized Solutions:

RTLS & Infant Protection
Parking & Perimeter Security
X-Ray Scanners, Road Blockers, Turnstiles



Acoustics Systems

Architectural Acoustics
Interior & Guest Space Acoustics
Noise & Vibration Control



Audio Video A/V Solutions

We deliver integrated AV solutions for training, conferencing, collaboration, entertainment, and marketing, following BICSI and INFOCOMM standards.

Key Offerings:

Lighting & Sound Systems
Conferencing & Smart Boards
Projectors & Video Walls
Digital Signage & Wayfinding
BGM & Advanced Sound Masking
Lecture Capture Systems





THANK YOU

We appreciate your time and interest in exploring Envision Technologies profile . Our commitment is to deliver value driven, future ready solutions tailored to your business needs. We look forward to the opportunity of working together and building something exceptional.

Let's envision the future — TOGETHER.